

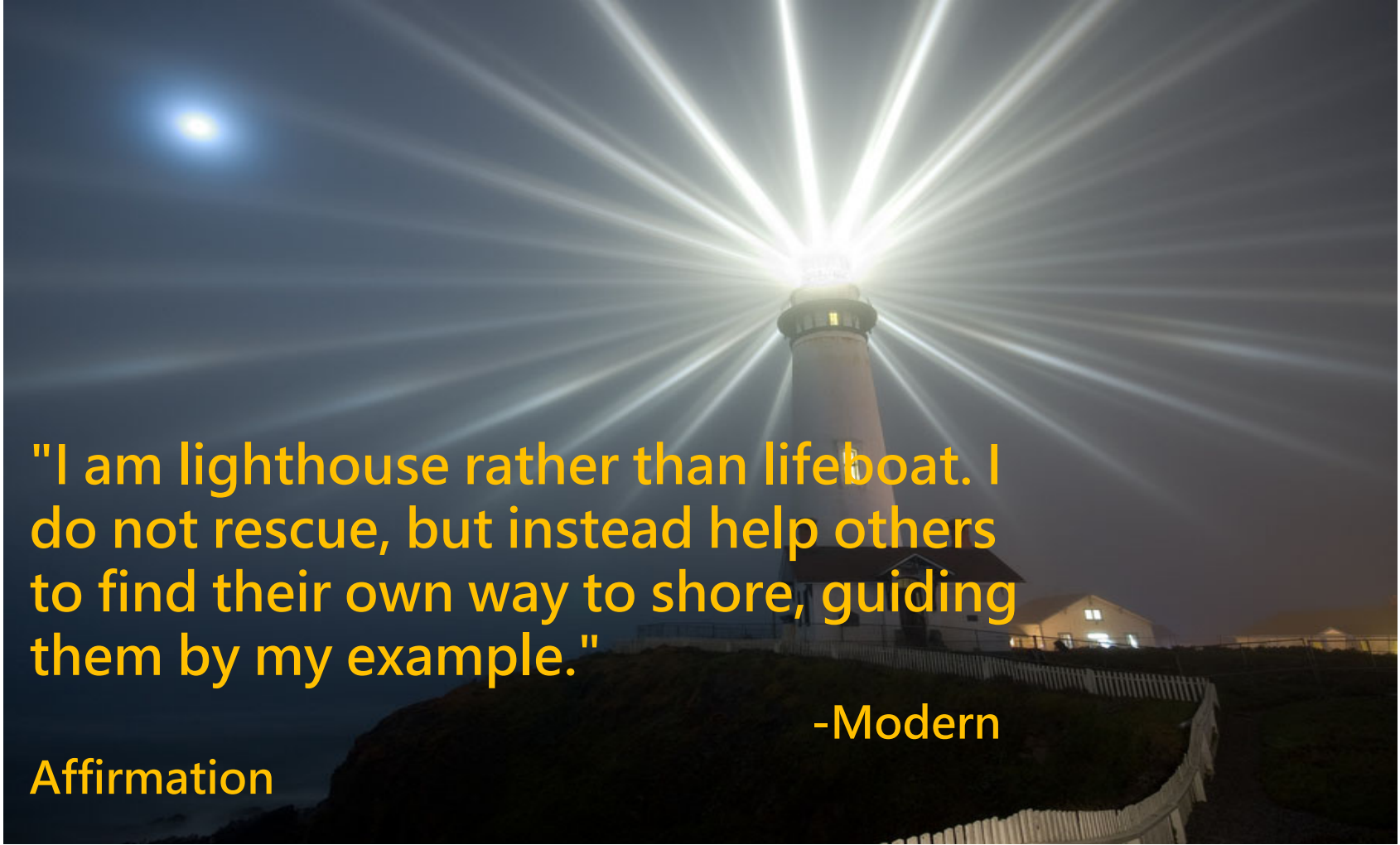
A photograph of a woman and a young girl smiling and hugging outdoors. The woman has long dark hair and is wearing a light blue striped shirt. The girl has curly hair and is wearing a white t-shirt. They are both smiling warmly at the camera. The background is a soft-focus outdoor setting with greenery and other people in the distance.

Using the Flexible Resources Process in Wraparound to Maximize effective use of Flex Funding

**UC DAVIS
EXTENSION**
CENTER FOR HUMAN SERVICES

RESOURCE CENTER FOR
FAMILY-FOCUSED PRACTICE

THE LIGHT HOUSE



"I am lighthouse rather than lifeboat. I do not rescue, but instead help others to find their own way to shore, guiding them by my example."

-Modern

Affirmation

TRANSFORMATIONAL COLLABORATIVE TRAINING

A powerful educational experience focused on

Self-Awareness, Empowerment, & Skill Development

TIME	OUR TIME Together
1pm-2:30pm	Session II
2:30pm	Take a 15 min. Break
2:45pm	Session II continued
3:45pm	Wrap up & Evaluations



Maximize effective use of Flex Funding

Objectives:

1. Discuss why & how flex funds were created
2. Understand the Wraparound Flexible Resource Process & how to effectively use funding
3. Identify main pitfalls and best practices of flex fund spending
4. Identify and practice fundamental ways to support sustainability with families while also meeting current needs and attending to engagement

FlexFunds



Flexible funds are made available so that a child will not be removed from a home in the community with people who know and love them just because of a lack of funds.

FlexFunds

Definition: Flexible Funds are monies that are time-limited and that may be used to fund non-traditional, culturally competent services/supports that empower parents and children.

Flexible Funds are used to assist with daily living expenses or programming not available through natural, informal or formal providers and when all other financial resources have been thoroughly exhausted.

The use of wraparound funds must reflect the core values and vision of the wraparound process.



FlexFunds

CLIFF NOTES

Flex Funds ARE

- Used only after all community resources have been exhausted.
- A means of assisting the family in completing a strategy.
- Are short term.
- Congruent with the needs and strategies listed on the Plan of Care

Flex Funds are NOT

- A long term solution.
- To be used without completing a family budget first.
- A first choice in completing a strategy or meeting a need.
- A method of building rapport or incentives.

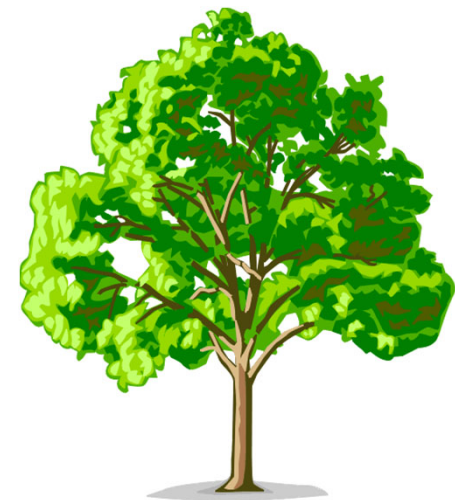
ACTIVITY



Work in groups and list some ways you have seen flex funds used effectively and some ways you have not...



TOUCHDOWN!





MR. LAZY
By Roger Hargreaves



**WARNING:
UNINTENDED
CONSEQUENCES
AHEAD**



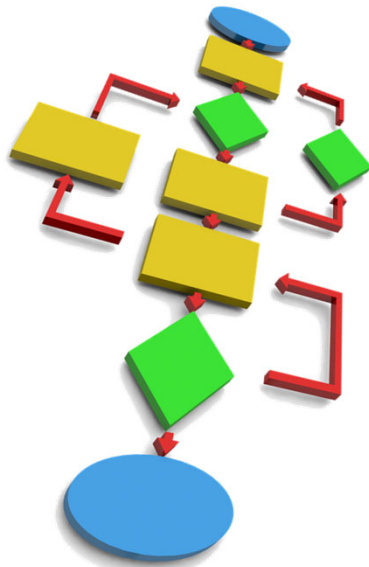
Crisis = Opportunity

- Crisis are to be expected and are natural within the Wrap process.
- The more thorough the plan, the higher chance for successful managing of crisis.
- Families have been surviving crisis long before wrap arrived.
- Responses vary per team and situation.
- One man's crisis is another man's Monday.



WRAPAROUND

FLEXIBLE RESOURCE PROCESS



Flexible Funds Money available to each child and family team to meet needs identified in the child and family plan. Funds can be used for nontraditional purposes. Flexible funds are supported by written policies that address how funds are accessed, tracked, and managed, and include a process for accessing funds quickly for emergencies.



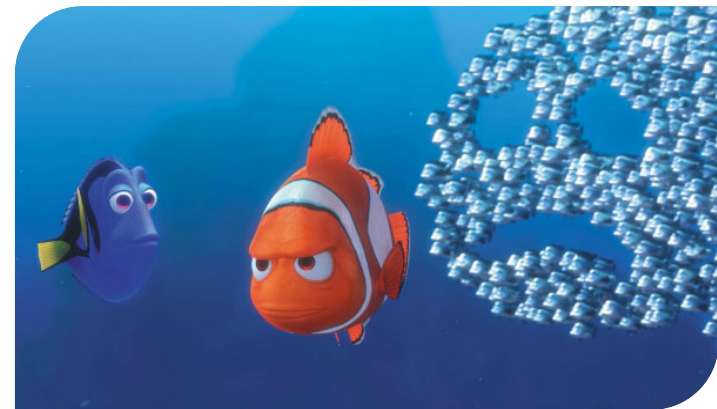
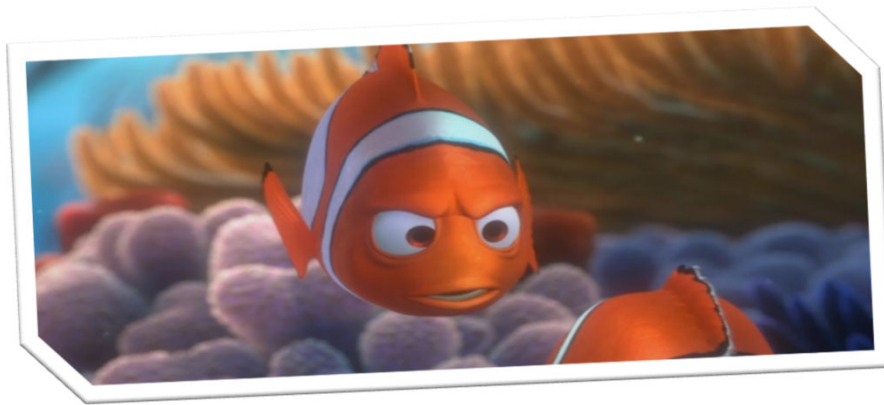
Our mission in Wraparound is to walk with family members modeling how resources and supports are accessed. In this way the family members will learn how to access natural and community resources themselves in the future when we are no longer with them.

If the family needs food for example, we might buy food with the flexible fund today and go with mom to the food bank tomorrow and support her in accessing food for when she runs out again in the future. In this way we have shown her how to do it for herself. We may even start anywhere in this process depending on the team and circumstances.



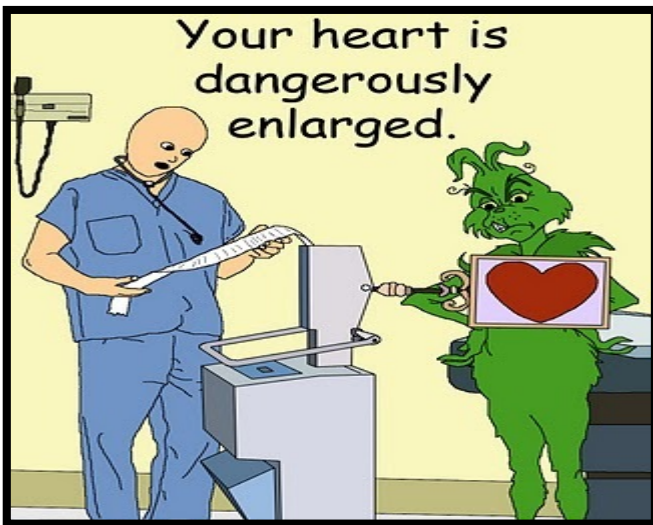


SNAP SHOTS



We make *JUDGEMENTS* from
SNAP SHOTS of people's lives

2 People (especially Wrap people) want to help





It's easy to solve problems with \$\$
when you are only looking at now



Hidden Rules Among Classes

	Poverty	Middle Class	Wealth
Possessions	People.	Things.	One-of-a-kind objects, legacies, pedigrees.
Money	To be used, spent.	To be managed.	To be conserved, invested.
Personality	Is for entertainment. Sense of humor is highly valued.	Is for acquisition and stability. Achievement is highly valued.	Is for connections. Financial, political, social connections are highly valued.
Social Emphasis	Social inclusion of people he/she likes.	Emphasis is on self-governance and self-sufficiency.	Emphasis is on social exclusion.
Food	Key Question: Did you have enough? Quantity important.	Key Question: Did you like it? Quality important.	Key Question: Was it presented well? Presentation important.
Clothing	Clothing valued for individual style and expression of personality.	Clothing valued for its quality and acceptance into norm of middle class. Label important.	Clothing valued for its artistic sense and expression. Designer important.
Time	Present most important. Decisions made for moment based on feelings or survival.	Future most important. Decisions made against future ramifications.	Traditions and history most important. Decisions made partially on basis of tradition and decorum.
Education	Valued and reserved as abstract but not as reality.	Crucial for climbing success ladder and making money.	Necessary tradition for making and maintaining connections.
Destiny	Believes in fate. Cannot do much to mitigate chance.	Believes in choice. Can change future with good choices now.	Noblesse Oblige.
Language	Casual register. Language is about survival.	Formal register. Language is about negotiation.	Formal register. Language is about networking.
Family Structure	Tends to be matriarchal.	Tends to be patriarchal.	Depends on who has money.
World View	Sees world in terms of local setting.	Sees world in terms of national setting.	Sees world in terms of international view.
Love	Love and acceptance conditional, based upon whether individual is liked.	Love and acceptance conditional and based largely upon achievement.	Love and acceptance conditional and related to social standing and connections.
Driving Forces	Survival, relationships, entertainment.	Work, achievement.	Financial, political, social connections.
Humor	About people and sex.	About situations.	About social faux pas.

ACTIVITY

Remember the last Flexible Fund request that made you uncomfortable. In your small group, talk about the following:

- Who on the team made the request? What was it for? How was it presented to the team?
- What other family/community options were considered?
- Was there team agreement about the use of Flexible Funds?
- How did the request promote child/family self-sufficiency?
- How were the Funds used to individualize the Family Team Plan?
- What were the barriers to appropriate use of Flexible Funds?



Protocols



Guidelines in practice

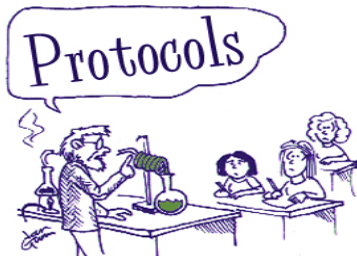


RESOURCE CENTER FOR
FAMILY-FOCUSED PRACTICE

*Alternatives to flex funds should be **CONSIDERED FIRST***

Flex funds are to be used only as a last resort. It is our goal to help families be creative in the way they get their needs met so that they can become less dependent on formal system supports over time. Below is a list of options that we would like for you to consider with your wrap team prior to flex funds being accessed.

- How has the family managed in similar situations in the past
- Complete a budget and identify areas to cut back
- Additional employment opportunities for parent/client
- Government programs (AFDC, food stamps, child support, HUD, rental rebates, EITC, SSI-D, county social worker assistance)
- Bartering with family/friends/neighbors
- Classified ads ("Free for the Taking", Craigslist)
- Discount coupons and or Donations
- Scholarships/Grants (Change a Life)
- Advance on paycheck or Loans/gifts from friends/family
- Community resources (internet, Directions book) & Low cost/no cost options
- Negotiate a payment plan or Pay for half and wrap will match your contribution





Flexible Funds should be used after:

- All family (both immediate and extended) resources have been explored
- All community resources have been explored
- All system resources have been explored
- All provider resources have been explored



- Review the mission of the family
- Ensure that the “need” is identified by the family within the context of their mission for their family
- Ensure that the team members agree with the need as identified
- Ensure that the “need” is addressed under a goal in the Family Team Plan
- Explore how the family met this need in the past
- Ensure that child/family and team members’ strengths that can help meet this need have been explored
- Complete a family budget
- Explore with the team the amount of time/money/frequency of resources that will be needed to meet this need
- Discuss with the team the desired result of meeting this need
- Explore the team plan for transitioning to a family community support
- Review the use of Flexible Funds and the transition plan at every team meeting
- Discuss with the team the desired result of meeting this need
- Explore the team plan for transitioning to family/community supports
- Review the use of Flexible Funds and the transition plan at every team meeting



Guidelines



A. NEED	POSSIBLE RESOURCES 1) Family's Personal and Social Network
B. STRENGTHS (related to this need)	2) Community Associations
	3) Programs and Professionals in the Community
C. LIFE DOMAIN	4) Categorical Services
	5) Wraparound Staff Time (see CFS/Family Partner Request Form)—Transition Plan: How will this need be met in the future?
	6) Wraparound Flexible Funds—Transition Plan: How will this need be met in the future?
Action Plan: Who? What? Where? When?	
Intended Outcome: Characteristics of completion.	
Initialed by CFT Members:	Date:
Completion Date:	

**Select resource provision source in the order listed below.
Start with #1-4, before accessing number 5 or 6.**

1. Family's Personal and Social Network

**Self
Siblings
Parents
Stepparents
Aunts, Uncles, Cousins
Friends
Neighbors
Classmates
Clerics
Church or Synagogue Members
Baby Sitters
Teachers
Coaches
Scout Masters
Others**

3. Programs and Professionals in the Community

**Public and Private Schools
Family Resource Centers
Day Care Centers
Senior Citizen Programs
Financial Planning Programs
Community Colleges
Institutions of Higher Learning
Recreational Programs
Libraries
Community Health Centers
Family Planning Centers
Police/ Fire Departments
Hospitals
Family Physicians/ Nurses
Community Officials
Legal Assistance Agencies
Housing Programs**

5. Wraparound

**Provision of Need/Service by Wraparound Specialist
Provision of Transportation by Wraparound Specialist**

6. Flex Funds

Wraparound Flexible Funding

2. Community Associations

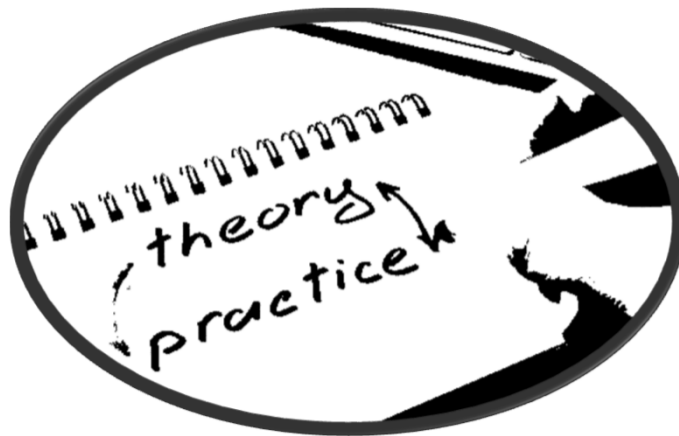
**Philanthropic Organizations
Business Organizations
Charitable Groups and Drives
Church Groups
Civic Events
Ethnic Associations
Senior Citizen Groups
Health and Fitness Groups
Interest Clubs
Outdoor Groups
Mutual Support & Self-Help Groups
Neighborhood and Block Clubs
Political Organizations
School Groups
Sport Leagues
Men, Women, Youth Groups**

4. Categorical Services

**Social Services Programs & Agencies
Probation Programs & Agencies
Mental Health Programs & Agencies
Public Health Clinics
County Emergency Funds
Home Health Agencies
Adult Basic Education Programs
Special Education Programs
Vocational Rehabilitation Programs
Substance Abuse Programs
Emergency Crisis Relief
Hospice Care
Respite Care
Special Health Care Clinics
Family Preservation Programs
Child Development Specialists
Specialized Transportation Services**



Get into your small groups

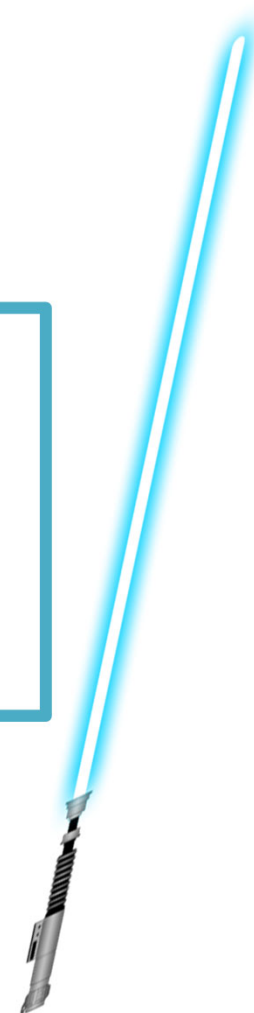


Understand the families values, attitudes and beliefs they are important in the use of flex funds. We often times impose our own on families and get upset at the perceived “lack of appreciation” with how we use them.



Flex funds like a are lightsaber they are very powerful but when impartially used they can be destructive

CONSISTENT protocols and procedures are important within a program especially for those in positions of Leadership. This will help identify on trends, patterns and messaging around the use of flex funds within a program. This by no means takes away from being individualized with our approach.



PERSPECTIVE

A Starfish Story...

A man was walking along a deserted beach early one morning. As he walked along the shoreline, he noticed dozens of starfish washing up on the sand, and he was saddened by the knowledge that as the tide receded they would die.

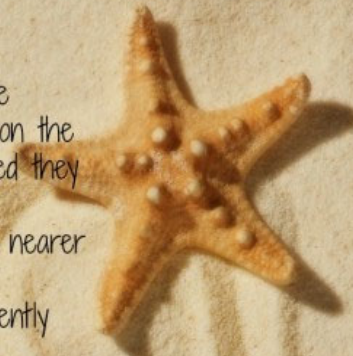
As he walked he could see a young boy in the distance, as he drew nearer he noticed that the boy kept bending down, picking up a starfish and throwing it far out into the deeper water. Time and again he bent, gently picked up a starfish, and threw it back into the ocean.

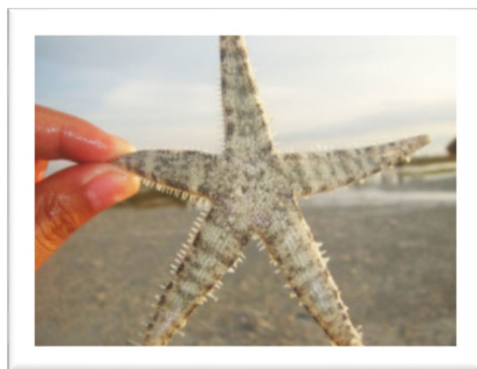
The man asked the boy what he was doing, the boy, looking confused, replied, "I am throwing these washed up starfish back into the ocean so they do not die through lack of oxygen."

"But", said the man, "Don't you see how futile this is? You can't possibly save them all; there are thousands on this beach, and this must be happening on hundreds of beaches along the coast. You can't possibly make a difference."

The boy smiled, bent down and picked up another starfish, and as he threw it back into the sea, he replied:

"I made a difference to that one!"






THANK YOU



**WE DO IT BECAUSE IT
NEEDS TO BE DONE.
BECAUSE IF WE DON'T, NO
ONE ELSE WILL. AND WE
DO IT EVEN IF NO ONE
KNOWS WHAT WE'VE
DONE. EVEN IF NO ONE
KNOWS WE EXIST. EVEN IF
NO ONE REMEMBERS WE
EVER EXISTED.**

A photograph of a woman with long dark hair and a young girl with curly hair, both smiling and hugging each other outdoors. The woman is wearing a light blue striped shirt, and the girl is wearing a white t-shirt. The background is a blurred green outdoor setting.

Using the Flexible Resources Process in Wraparound to Maximize effective use of Flex Funding

**UCDAVIS
EXTENSION**
CENTER FOR HUMAN SERVICES

RESOURCE CENTER FOR
FAMILY-FOCUSED PRACTICE