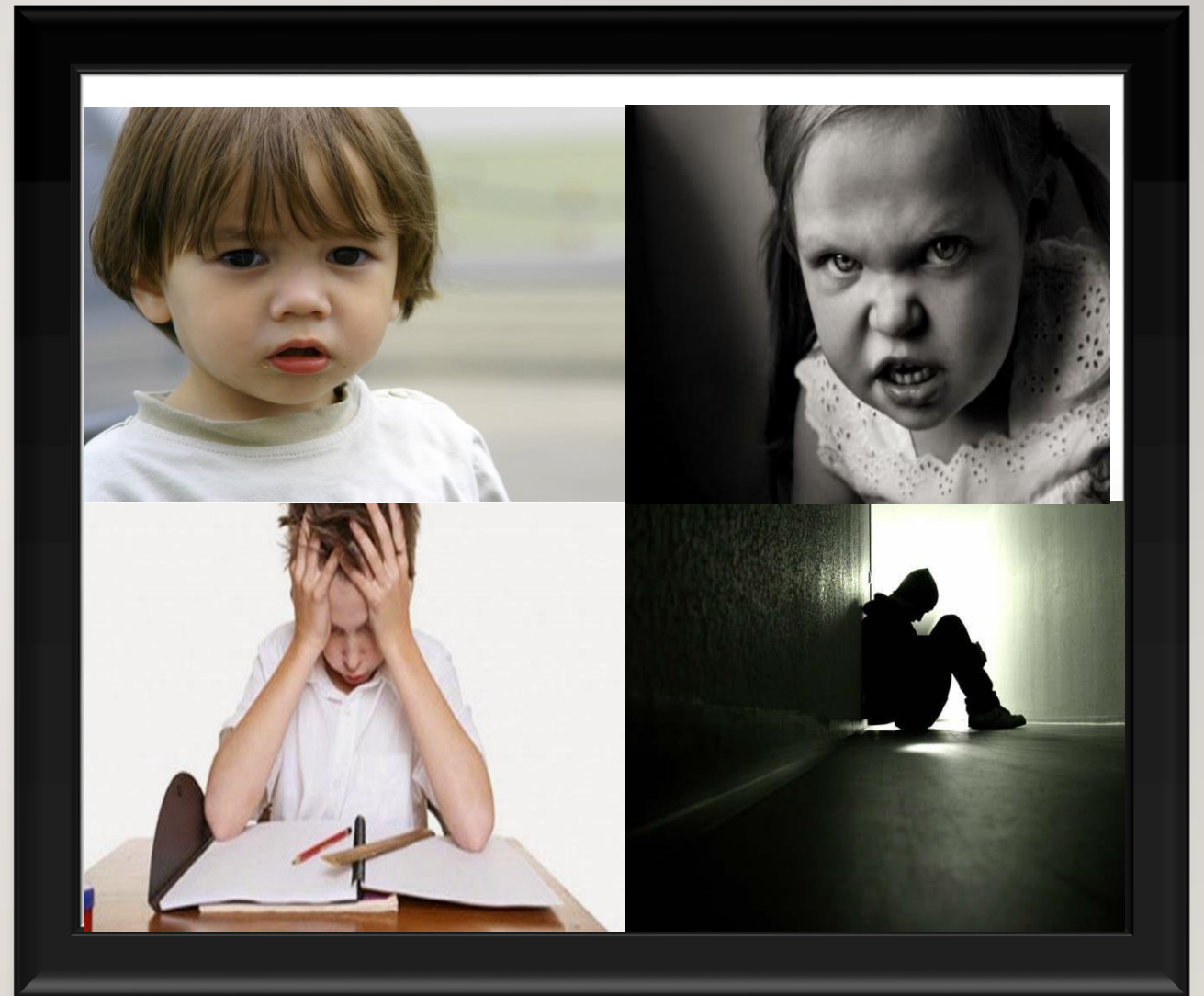

“THE TRAUMA OF A CROSSOVER YOUTH”



“THE TRAUMA OF A CROSSOVER YOUTH”

SEVEN FEDERAL OUTCOMES

- Maltreatment in foster care
- Recurrence of maltreatment
- Permanency in 12 months for children entering foster care
- Permanency in 12 months for children in foster care 12-23 months
- Permanency in 12 months for children in foster care 24 months or more
- Re-entry to foster care
- Placement stability

“THE TRAUMA OF A CROSSOVER YOUTH” SYSTEM IMPROVEMENT PLAN STRATEGY (SIP)

- Priority One: Reduce Recurrence of Maltreatment
- Priority Two: Increase Permanency in 12 months for Children entering Foster Care
- Priority Three: Enhance County Case Review System
- Priority Four: Enhance County Child Welfare's Quality Assurance System

“THE TRAUMA OF A CROSSOVER YOUTH” COLLABORATIONS

- System Improvement Plan
- Federal Case Review
- Permanency Collaboration

THE TRAUMA OF A CROSSOVER YOUTH” TIMELINE



“THE TRAUMA OF A CROSSOVER YOUTH” TIMELINE

- **Francisco’s 9th contact with DCFS was also the time when he crossed over to Probation in 2017 with a total of 48 allegations from 3 months to 17 years old.**
- **Out of the 48 allegations:**
 - **21 Substantiated**
 - **22 Inconclusive**
 - **5 Unfounded**

“THE TRAUMA OF A CROSSOVER YOUTH”

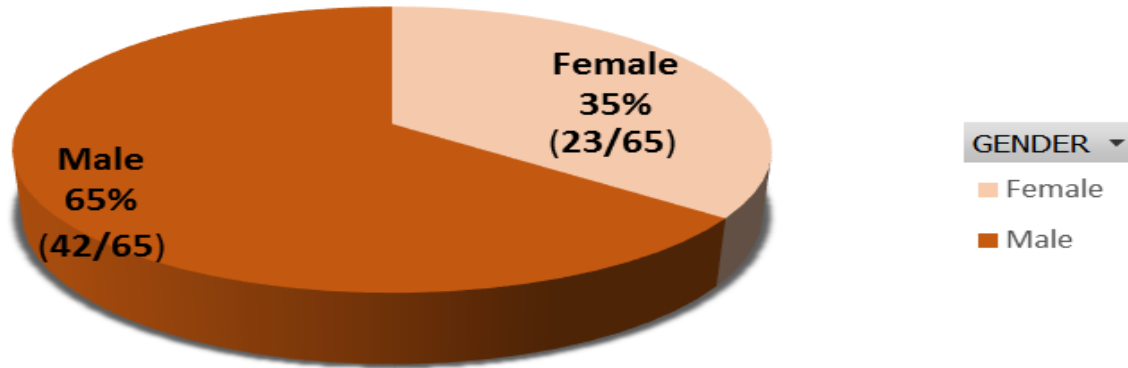
MIKESHA DOE – MOTHER

- Pregnancy and Early Childhood
- Generational Child Welfare & Probation Child Welfare history
- Resilient – Cooperated with Child Welfare agencies to keep children at home
- Strong bond with Francisco and other children
- Struggles with homelessness and making ends meet
- Often felt no one listened or tried to understand her
- Did not receive parenting training and refused some optional services

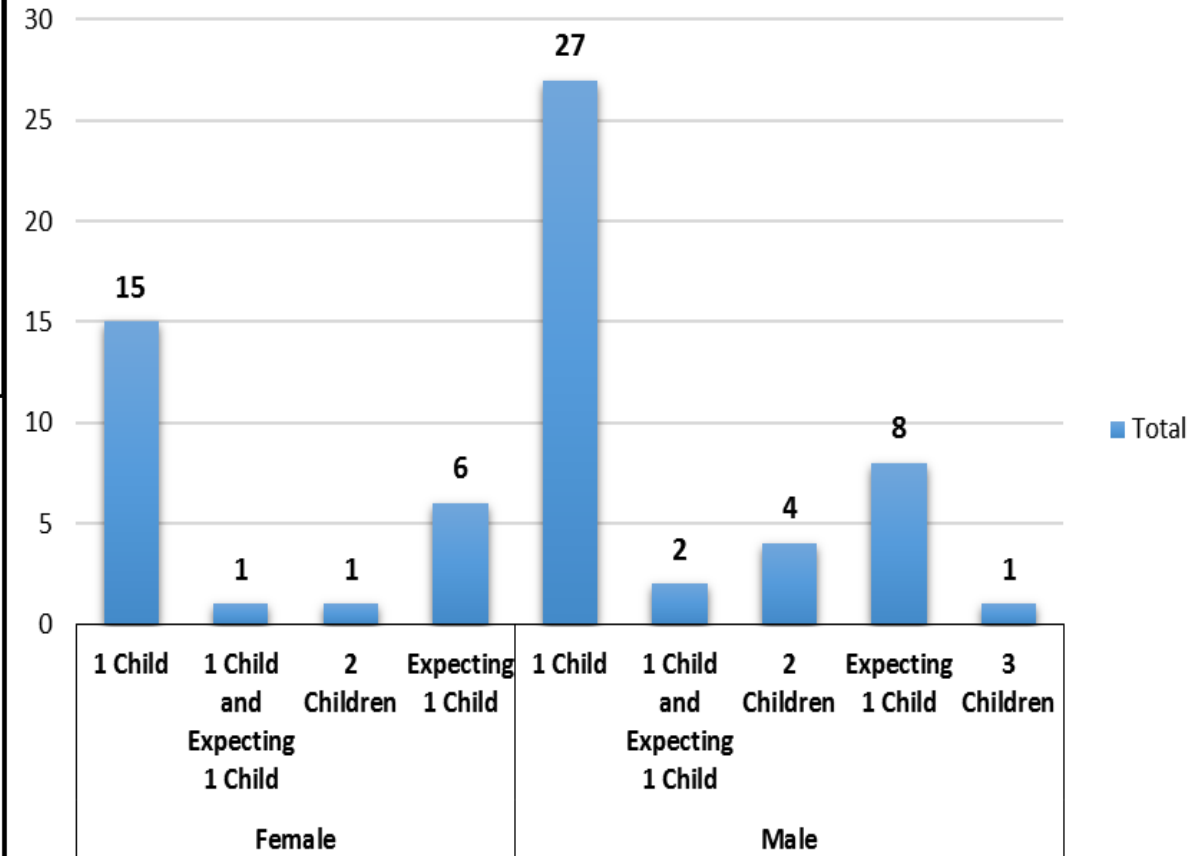
PREGNANT & PARENTING YOUTH

Count of PDJ#

Placement Youth & NMDs Parents/Expectant Parents



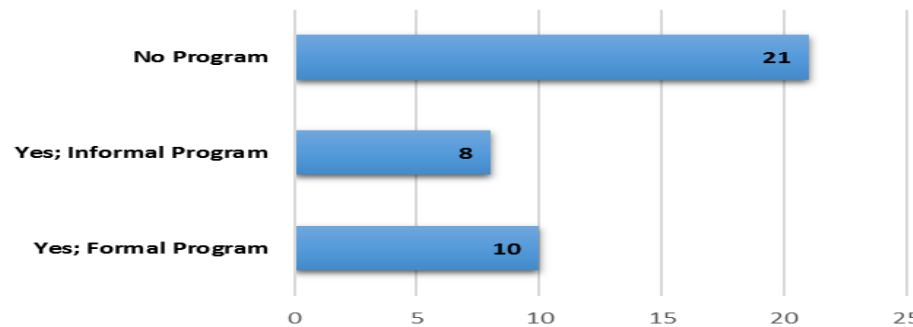
Placement Youth & NMDs Parents/Expectant Parents: Number of Children



Count of GH/STRTP

STRTPs that have Parenting Training for Youth/NMDs

YOUTH TRAINING PROGRAM ▾



“THE TRAUMA OF A CROSSOVER YOUTH” RECURRENCE OF MALTREATMENT



- **Items 2: Services to Family to Protect Child(ren) in the Home and Prevent Removal or Re-Entry into Foster Care**
 - Did the agency make concerted efforts to provide or arrange for appropriate services for the family to protect the children and prevent their entry into foster care or re-entry into foster care after a reunification?
- **Items 3: Risk and Safety Assessment and Management**
 - Did the agency: (1) develop an appropriate safety plan with the family and (2) continually monitor and update the safety plan as needed, including monitoring family engagement in any safety-related services?

“THE TRAUMA OF A CROSSOVER YOUTH” RECURRENCE OF MALTREATMENT

- *Case Review Item 3-Children are Safely Maintained in their Homes Whenever Possible and Appropriate. (Overall Compliance Score 62%)*
- *To determine whether, during the period under review, the agency made concerted efforts to assess and address the risk and safety concerns relating to the child(ren) in their own homes or while in foster care.*

“THE TRAUMA OF A CROSSOVER YOUTH”

KENDRA – CHILDREN’S SOCIAL WORKER

- **Items 12A: Needs Assessment and Services to Children**
 - Did the agency conduct a formal or informal initial and/or ongoing comprehensive assessment that accurately assessed the child’s needs?
 - Did the agency provide appropriate services to meet the child’s identified needs?
- **Item 12B: Needs Assessment and Services to Parents**
 - Did the agency conduct a formal or informal initial and/or ongoing comprehensive assessment that accurately assessed the mother’s and father’s needs?
 - Did the agency provide appropriate services to the mother and father to meet identified needs

“THE TRAUMA OF A CROSSOVER YOUTH”

KENDRA – CHILDREN’S SOCIAL WORKER

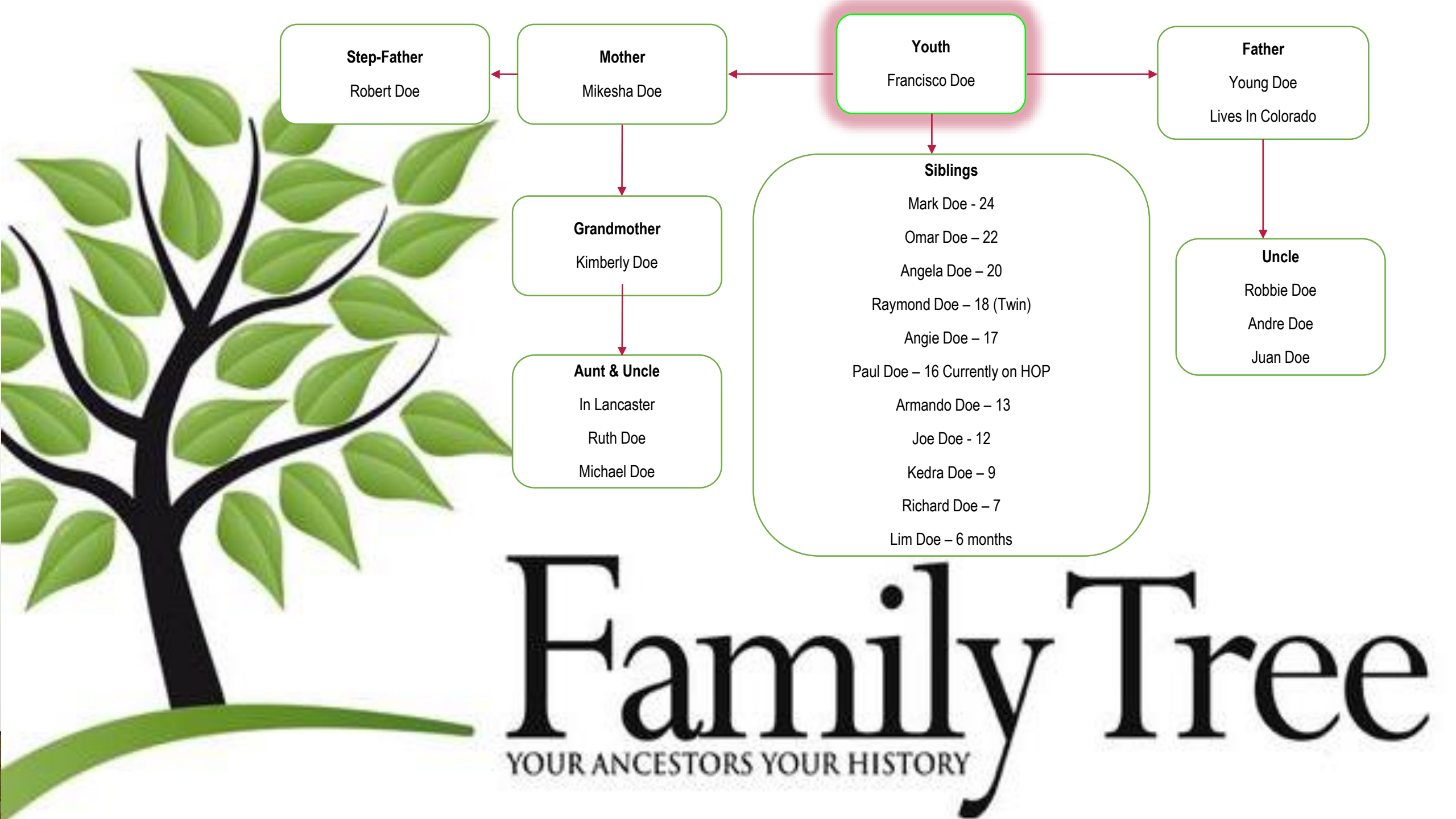
- **Case Review Item 12-Needs and Services of Child, Parents, and Foster Parents. (Overall Compliance Score 15%)**
- *To determine whether, during the period under review, did the agency make concerted efforts to assess the needs of the youth, parents, and foster parents/group home, identify the services necessary to achieve case goals and adequately address issues relevant to the agency’s involvement with family and provide the appropriate services.*

“THE TRAUMA OF A CROSSOVER YOUTH” CASE PLANNING

- **Items 13: Child and Family Involvement in Case Planning**
 - Did the agency make concerted efforts to actively involve the child in the case planning process?
 - Did the agency make concerted efforts to actively involve the mother and father in the case planning process?

“THE TRAUMA OF A CROSSOVER YOUTH” CASE PLANNING

- *Case Review Item 13-Child and Family Involvement in Case Planning (Overall Compliance Score 15%)*
- *To determine whether, during the period under review, concerted efforts were made (or being made) to involve parents and children's (if developmentally appropriate) in the case planning process on an ongoing basis.*



Family Tree

YOUR ANCESTORS YOUR HISTORY

“THE TRAUMA OF A CROSSOVER YOUTH” YOUNG DOE – FATHER



PERMANENCY

- **Items 8B: Visiting with Parents and Siblings in Foster Care**
 - Were concerted efforts made to ensure that visitation between the child and his father was sufficient frequency to maintain or promote the continuity of the relationship?
- **Items 11B: Relationship of Child in Care with Parents**
 - Were concerted efforts made to promote, support, and otherwise maintain a positive and nurturing relationship between the child in foster care and his father?

“THE TRAUMA OF A CROSSOVER YOUTH” YOUNG DOE – FATHER

- *Case Review Item 8-Visiting with Parents and Siblings in Foster Care. (Overall Compliance Score 33%)*
- *To determine whether, during the period under review, concerted efforts were made to ensure that visitation between a child in foster care and his or her mother, father, and siblings is of sufficient frequency and quality to promote continuity in the child’s relationship with these close family members.*
- *Case Review Item 11: Relationship of Child in Care with Parents (Overall Compliance Score 50%)*
- *To determine whether, during the period under review, concerted efforts were made to promote, support, and/or maintain positive relationships between the youth in foster care and his or her mother and father or primary caregiver(s) from whom the child had been removed through activities other than arranging for visitation.*



“THE TRAUMA OF A CROSSOVER YOUTH”

MS. Y – FOSTER MOTHER/CASE MANAGER

- CHILDREN HAVE PERMANENCY AND STABILITY IN THEIR LIVING SITUATIONS
- **Items 4: Stability of Foster Care Placement**
 - The child’s current placement is in a temporary shelter or other temporary setting.
 - There is information indicating that the child’s current substitute care provider may not be able to continue to care for the child.
 - There are problems in the current placement threatening its stability that the county is not addressing.
 - The child has run away from this placement more than once in the past, or is in runaway status.

“THE TRAUMA OF A CROSSOVER YOUTH”

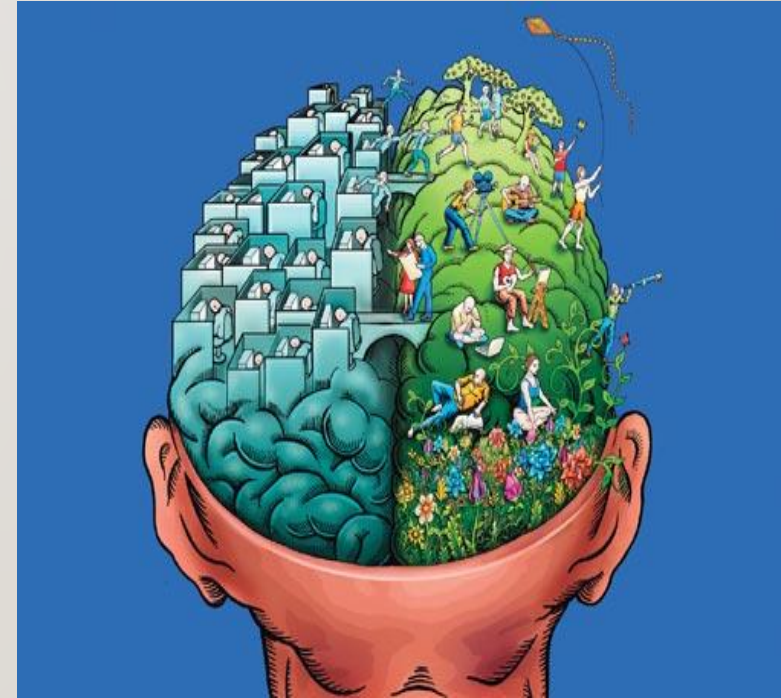
MS. Y – FOSTER MOTHER/CASE MANAGER

- **Case Review Item 4: Stability of Foster Care Placement. (Overall Compliance Score 33%)**
- *To determine whether the youth in foster care is in a stable placement at the time of the onsite review and any changes in placement that occurred during the PUR that were in the best interests of the youth and consistent with achieving the youth’s permanency goal(s).*

“ THE TRAUMA OF A CROSSOVER YOUTH”

FRANCISCO DOE – YOUTH

- Foster care from infancy to 17years old, 16 different placements
- 15 Social Workers
- 48 allegations of Substantiated or Inconclusive Child Abuse
- The other family “gang association”



“THE TRAUMA OF A CROSSOVER YOUTH”

LISA – DEPUTY PROBATION OFFICER

- Well-Being & Self Sufficiency
- Transitional Housing
- Independent Living Program



“THE TRAUMA OF A CROSSOVER YOUTH”

LISA – DEPUTY PROBATION OFFICER

- **Case Review Item 16-Educational Needs of the Child (Overall Compliance Score 54%)**
- *To assess whether, during the period under review, the agency made concerted efforts to assess the youth’s educational needs at the initial contact with the youth or on an ongoing basis and whether identified needs were appropriately addressed in case planning and case management activities.*
- **Case Review Item 17-Physical Health of the Child (Overall Compliance Score 77%)**
- *To determine whether, during the period under review, the agency addressed the physical health needs of the youth, including dental health needs.*
- **Case Review Item 18-Mental Behavioral of the Child (Overall Compliance Score 75%)**
- *To determine whether, during the period under review, the agency addressed the mental/behavioral health needs of the youth.*

“THE TRAUMA OF A CROSSOVER YOUTH” LISA – DEPUTY PROBATION OFFICER

Core Practice Model

Family Centered and Trauma Responsive

- Teaming
- Engagement
- Assessment and Understanding
- Planning and Intervention
- Tracking and Adapting (CQI)



“THE TRAUMA OF A CROSSOVER YOUTH”

