

Northern California Training Academy Research Evidence Use Practicum

Selecting a sample for case record review

December 13, 2016

Jennifer Haight and Lily Alpert

The Center for State Child Welfare Data
Chapin Hall at the University of Chicago

1

Case record review

Case record review is method that you can use to answer a question:

- Do reunifying teens have different behavioral issues than reunifying toddlers?
- Does County X provide more intensive after care services than County Y?
- How is casework with children exiting to reunification different from casework with children exiting to relatives?
- Why would children with short durations in care be more likely to reenter than children with longer durations?

Just as in quantitative data analysis: **Know your question. Write it down.**

2

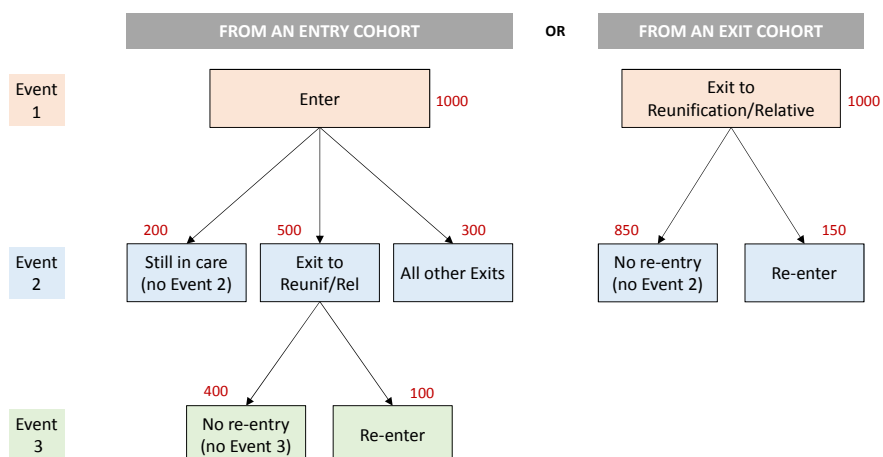
Selecting a case record review sample

Which cases should I sample?

- As in quantitative analysis, the population from which you sample has to match your question. Your population is your **sampling frame**.
- The sampling frame must include all those who were “at risk” of achieving the outcome of interest.
 - For example, if you wanted to learn about why infants re-enter care and you only reviewed cases of infants who re-entered, you will only be reviewing the “failures.”
 - To learn about what differentiates re-entering infants from non-re-entering infants, you’ll want to sample from all exiting infants, and then compare re-enterers to non-re-enterers.

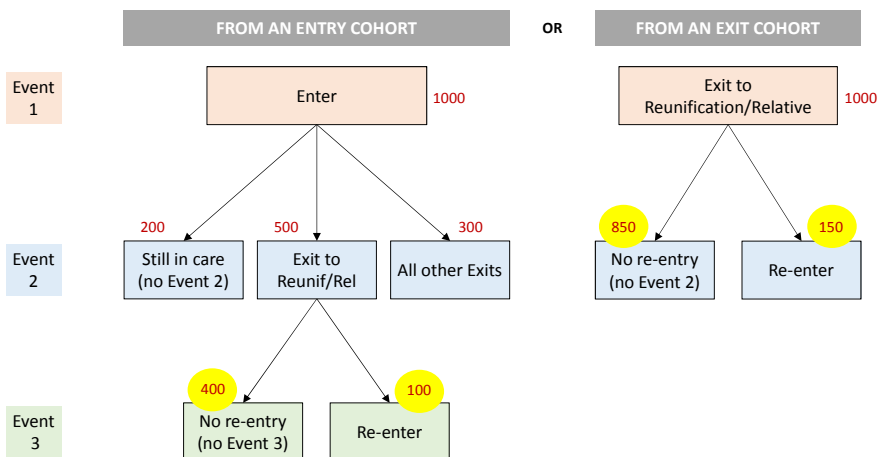
3

How do I find my sampling frame?



4

Do children who re-enter experience less oversight during trial home visit than children who don't re-enter?



5

Selecting a case record review sample

All Spells: FCDA web tool <https://fcda.chapinhall.org>

Example: All children who exited to reunification or relative in Sacramento in 2014.

County
(multiple selections allowed)

- Orange
- Placer
- Plumas
- Riverside
- Sacramento**

Discharges
Exit destination
(multiple selections allowed)

- Completed Adoption
- Reunite with Family**
- Other Guardianship
- Kin Guardianship

Exit date:

From: 01-01-2014

To: 12-31-2014

List records
Choose columns to return for selected spells.
(multiple selections allowed)

- All**
- Child ID
- State
- County
- Level of Urbanicity
- Gender

List records

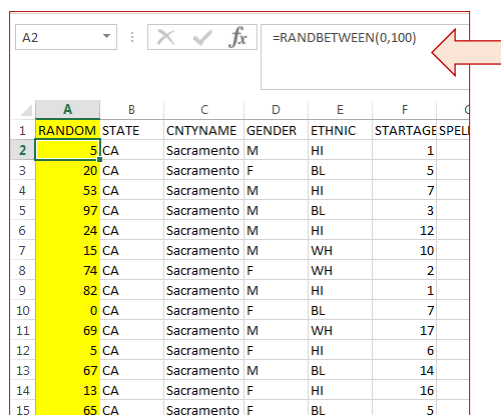
Download Data

Download data to a .csv file

6

Selecting a case record review sample

Assign a random variable to each spell using the **RANDBETWEEN** formula.
(Copy new column and paste values.)



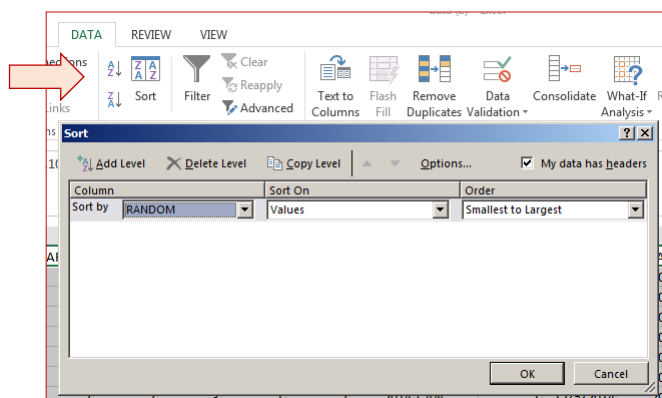
Formula bar: `=RANDBETWEEN(0,100)`

1	RANDOM	STATE	CNTYNAME	GENDER	ETHNIC	STARTAGE	SPELL
2	5	CA	Sacramento	M	HI	1	
3	20	CA	Sacramento	F	BL	5	
4	53	CA	Sacramento	M	HI	7	
5	97	CA	Sacramento	M	BL	3	
6	24	CA	Sacramento	M	HI	12	
7	15	CA	Sacramento	M	WH	10	
8	74	CA	Sacramento	F	WH	2	
9	82	CA	Sacramento	M	HI	1	
10	0	CA	Sacramento	F	BL	7	
11	69	CA	Sacramento	M	WH	17	
12	5	CA	Sacramento	F	HI	6	
13	67	CA	Sacramento	M	BL	14	
14	13	CA	Sacramento	F	HI	16	
15	65	CA	Sacramento	F	BL	5	

7

Selecting a case record review sample

Sort spells by the random variable.



8

Selecting a case record review sample

	A	B	C	D	E	F	G	H	I
1	RANDOM	STATE	CNTYNAME	GENDER	ETHNIC	STARTAGE	SPELLAGE	EXITAGE	AGEC
2	0	CA	Sacramento	F	BL	7	7	8	
3	5	CA	Sacramento	M	HI	1	1	1	
4	5	CA	Sacramento	F	HI	6	6	7	
5	7	CA	Sacramento	F	WH	14	14	14	
6	13	CA	Sacramento	F	HI	16	16	16	
7	14	CA	Sacramento	F	BL	1	1	3	
8	15	CA	Sacramento	M	WH	10	10	10	
9	20	CA	Sacramento	F	BL	5	5	5	
10	20	CA	Sacramento	F	BL	16	16	16	
11	21	CA	Sacramento	F	HI	1	1	1	
12	24	CA	Sacramento	M	HI	12	12	13	
13	25	CA	Sacramento	F	HI	14	14	14	
14	48	CA	Sacramento	F	WH	8	8	8	
15	50	CA	Sacramento	M	BL	2	2	4	
16	53	CA	Sacramento	M	HI	7	7	7	
17	57	CA	Sacramento	F	BL	11	11	12	
18	64	CA	Sacramento	M	BL	16	16	17	

Starting from the top, select the first ## cases. Because this is a random sample, it should, by definition, give you a representative sample of trajectories (for example, children who re-entered and children who didn't).

9

	A	AA	AB	AC	D
1	RANDOM	LASTPLAC_TYPE	NPLACES	REENTER	
2	1	PAF	1	0	
3	1	PKC	2	0	
4	1	PCF	1	0	
5	1	POT	1	0	
6	1	PKC	2	1	
7	1	PAD	1	0	
8	2	PAF	1	0	
9	2	PCF	1	0	
10	2	PKC	1	0	
11	2	PKC	1	0	
12	2	PAF	6	0	
13	3	PKC	1	0	
14	3	PHO	3	1	
15	3	PKC	1	0	
16	3	PCF	1	0	
17	3	PKC	2	1	
18	3	PAD	1	0	
19	3	POT	3	0	
20	4	PKC	1	0	
21	4	PHO	6	1	
22	4	PCF	1	0	
23	4	PKC	2	0	
24	4	PCC	2	0	
25	4	PAD	2	0	
26	5	PAD	3	0	
27	6	PHO	4	1	
28	6	PCC	3	0	
29	6	POT	1	0	
30	6	PAF	1	0	

If you want to be sure to have the same number of cases per category – for instance, 5 cases of children who re-entered and 5 children who did not – sort by the random variable, find the criterion variable of interest (in this case REENTER), and pick the first 5 NOs followed by the first 5 YESses.

Need to qualify re-entry to “re-entry within one year: Y/N”? Create a new variable and select based on that criterion.

10

