


NCCD

Children's  
Research Center

California's  
Structured Decision Making®  
Basic Orientation Version 3.0



---

---

---

---

---

---

---

---

Introductions and Warm-Up


At your tables:

Introduce yourself and identify your program assignment.

Scale your knowledge of the Structured Decision Making® (SDM) system from 0 (new to the SDM® system, no knowledge) to 10 (extensive experience with using the SDM system).

Share a word or phrase that describes what you have heard or think about the SDM system.

***Be ready to share group highlights!***



---

---

---

---

---

---

---

---

Overview of Two-Day Workshop

Day	Main Topics
One	<ul style="list-style-type: none"><li>• Overview of SDM system</li><li>• Basic concepts</li><li>• Hotline tool</li><li>• Safety assessment</li><li>• Safety planning</li><li>• Substitute care provider safety assessment</li></ul>
Two	<ul style="list-style-type: none"><li>• Understanding concept of risk</li><li>• Risk assessment</li><li>• Family strengths and needs assessment</li><li>• Linking the SDM system to ongoing casework</li><li>• Risk reassessment</li><li>• Reunification reassessment</li></ul>

---

---

---

---

---

---

---

---



---

---

---

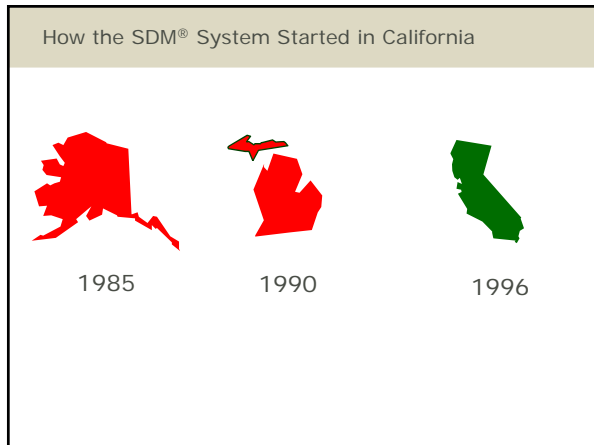
---

---

---

---

---



---

---

---

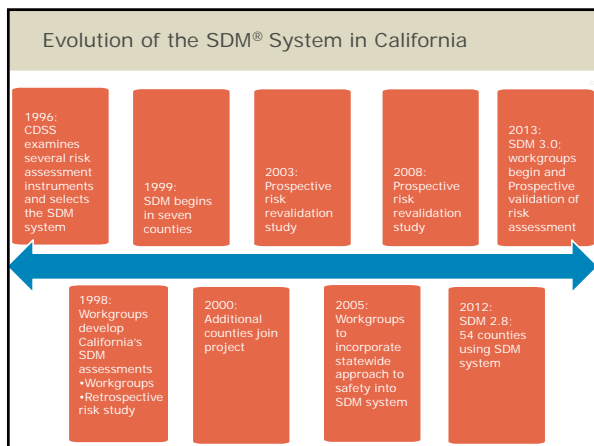
---

---

---

---

---



---

---

---

---

---

---

---

---

What is the SDM® system?

A research- and evidence-based decision-support system

---

---

---

---

---

---

---

The SDM® System Supports Families and Children

The SDM system ensures the safety, permanency, and well-being of children and families by:

- Reducing subsequent harm to children; and
- Expediting permanency.



---

---

---

---

---

---

---

The SDM® System Is a Comprehensive Framework



---

---

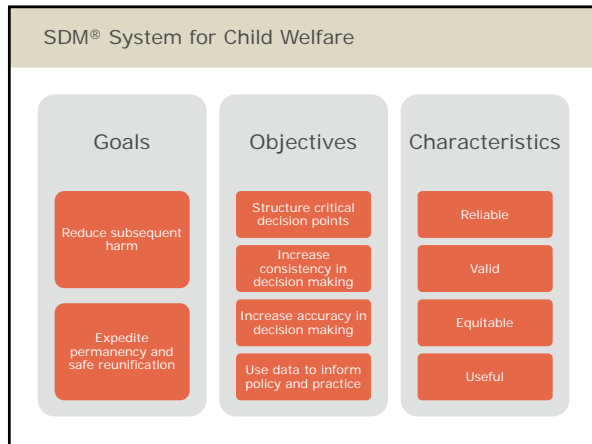
---

---

---

---

---



---

---

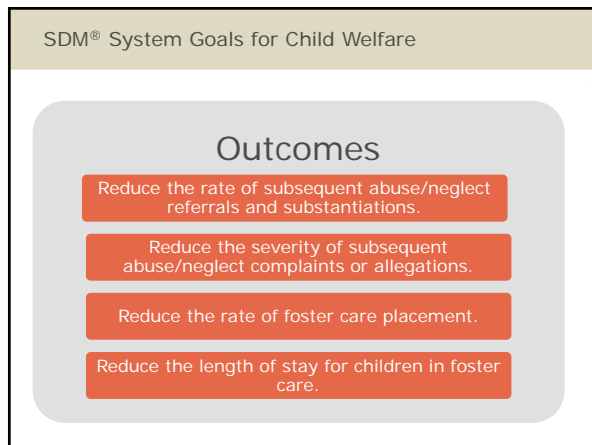
---

---

---

---

---



---

---

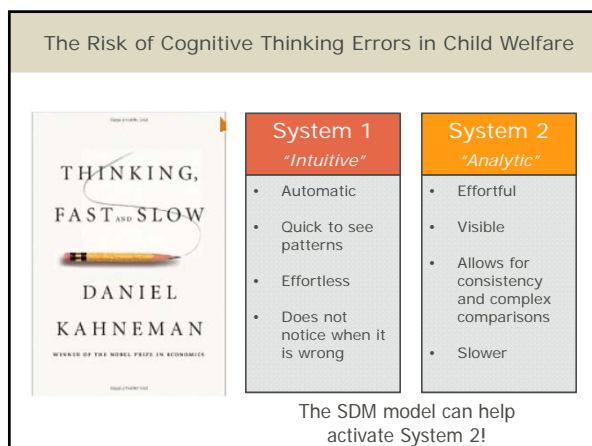
---

---

---

---

---



---

---

---

---

---

---

---

The SDM® System Structures Key Decisions



- ☐ yes
- ☐ no
- ☐ maybe

---

---

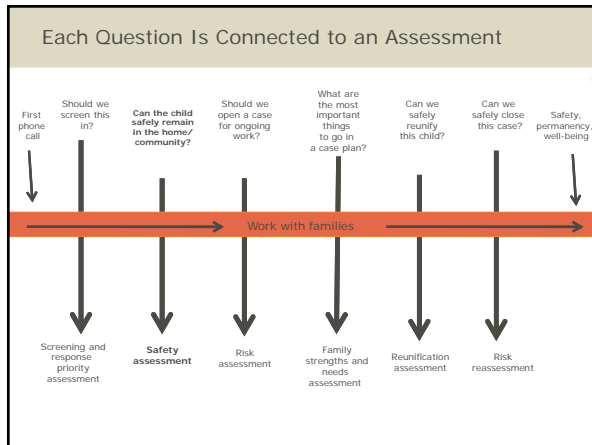
---

---

---

---

---



---

---

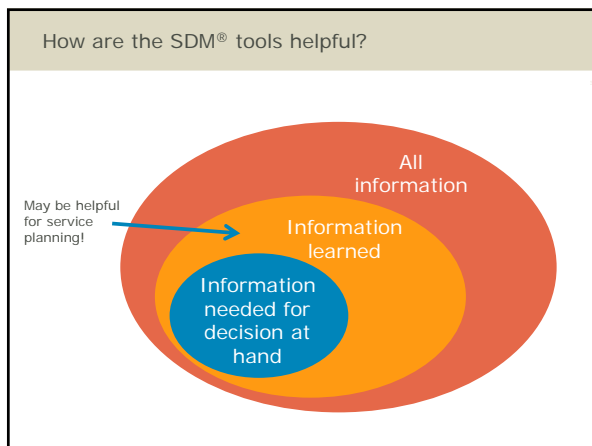
---

---

---

---

---



---

---

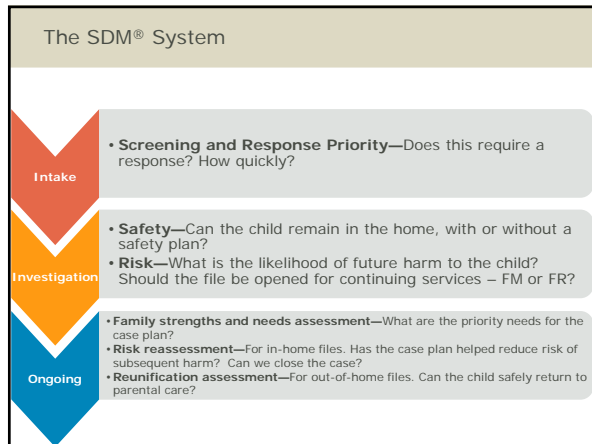
---

---

---

---

---



---

---

---

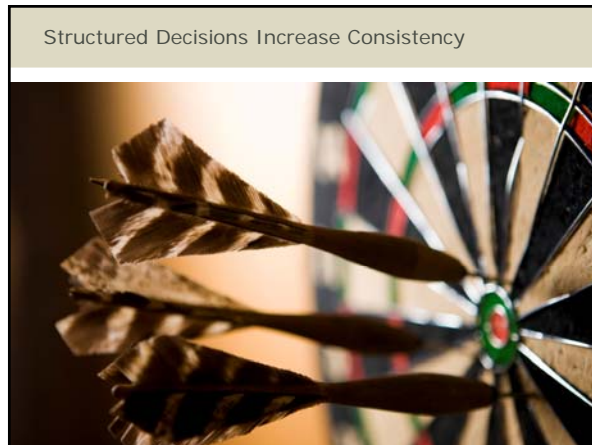
---

---

---

---

---



---

---

---

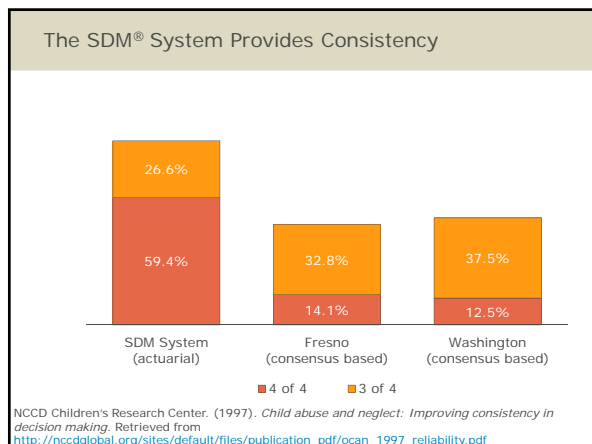
---

---

---

---

---



---

---

---

---

---

---

---

---

### CRC Rigorously Tests the SDM® Assessments



SDM assessments undergo extensive testing to make sure that the assessments lead to at least 75% consistency in decisions between social workers.

---

---

---

---

---

---

---

---

### The SDM® System Increases Accuracy



---

---

---

---

---

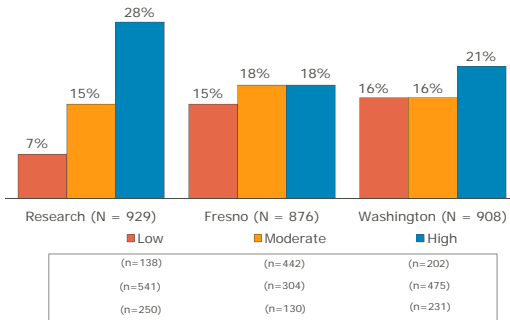
---

---

---

### Accuracy

#### 18-Month Substantiation Rates



---

---

---

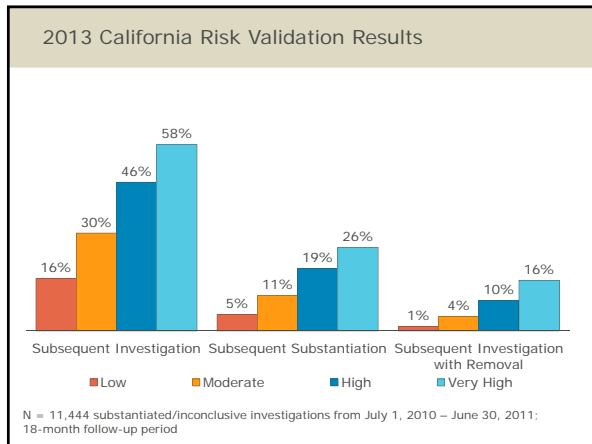
---

---

---

---

---



---

---

---

---

---

---

---

---



---

---

---

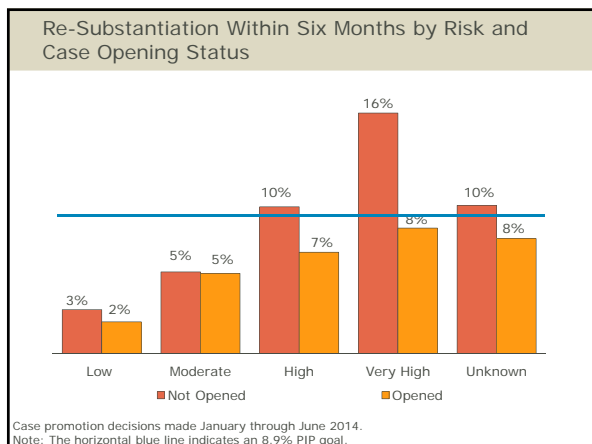
---

---

---

---

---



---

---

---

---

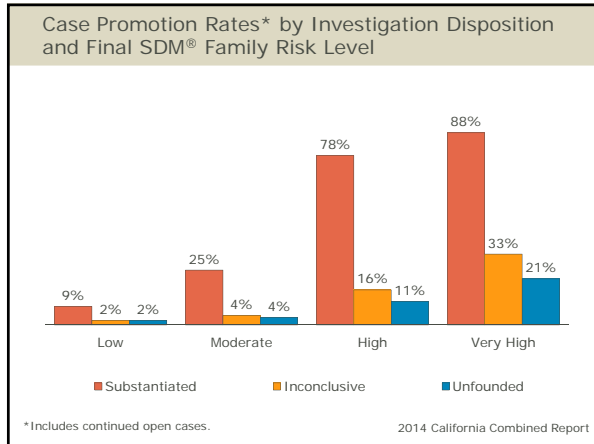
---

---

---

---





---

---

---

---

---

---

---

---



---

---

---

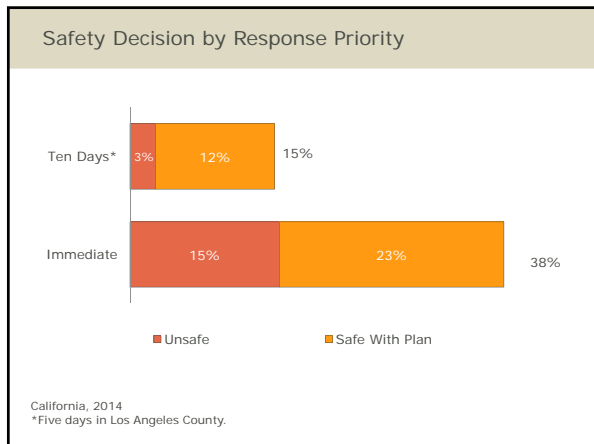
---

---

---

---

---



---

---

---

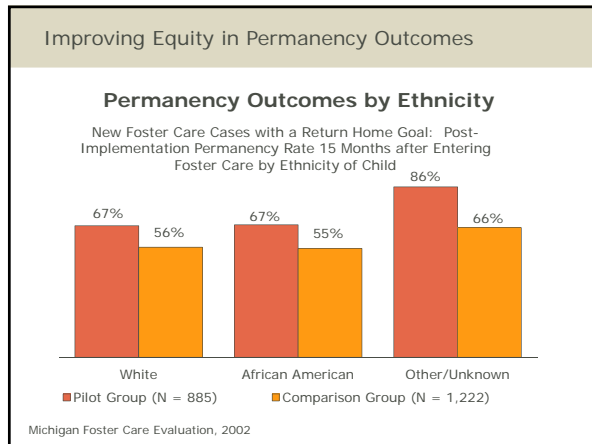
---

---

---

---

---



---

---

---

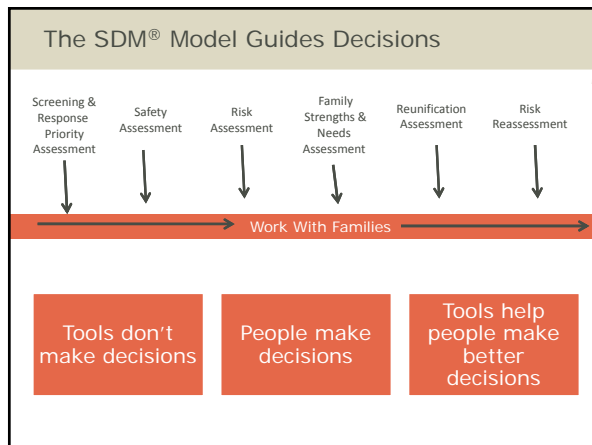
---

---

---

---

---



---

---

---

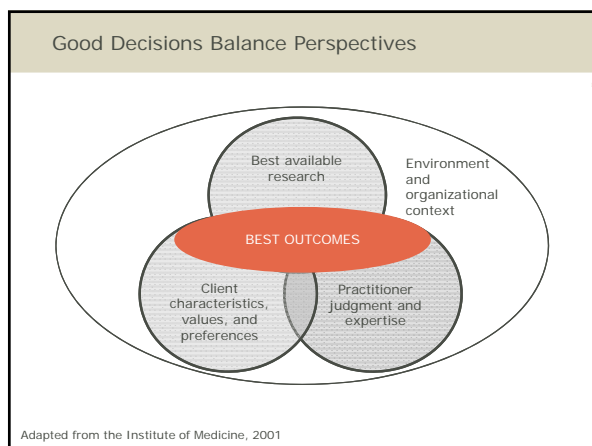
---

---

---

---

---



---

---

---

---

---

---

---

---

Good Working Relationships Enrich the SDM® Model



Farmer, E., & Owen, M. (1995). *Child protection practice: Private risks and public remedies*. London: HMSO.

---

---

---

---

---

---

---

---



---

---

---

---

---

---

---

---