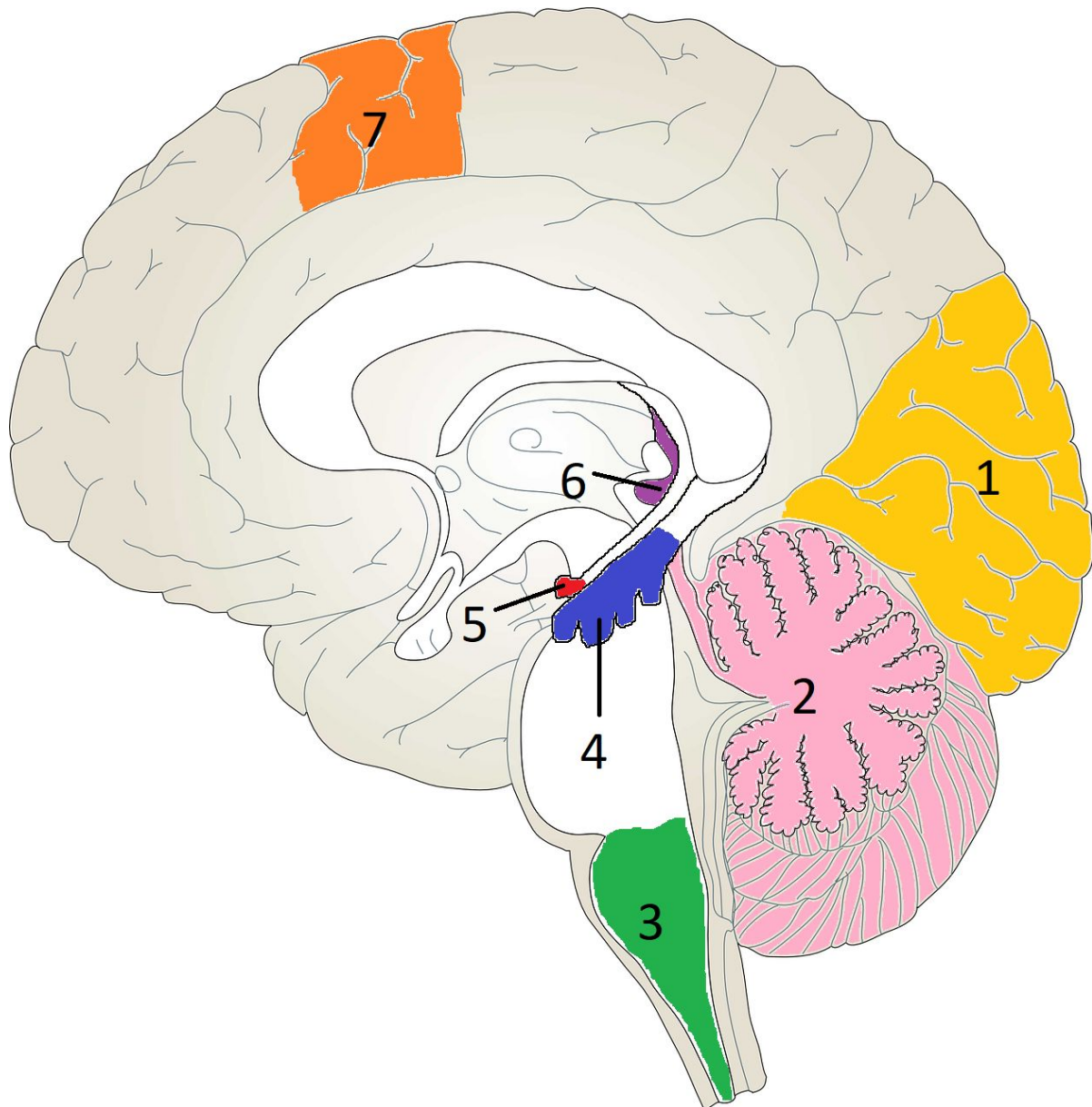


Brain Functions (14 points)



Word Bank

- Amygdala
- Cerebellum
- Hippocampus
- Medulla
- Motor Cortex
- Occipital Lobe
- Thalamus

Look at the diagram of a human brain above. Some parts are labeled with colors and numbers. Answer the questions below. Use complete sentences and **your own words**.

The questions will ask you which part of the brain is in that section and what that part of the brain does. The word bank below the diagram can help you. The first question has been done for you.

1. Number one is in yellow. What part of the brain is number one? What is its function?

Number one is the occipital lobe. It interprets visual information, what you see.

2. Number two is in pink. What part of the brain is number two? What is its function?

3. Number three is in green. What part of the brain is number three? What is its function?

4. Number four is in blue. What part of the brain is number four? What is its function?

5. Number five is in red. What part of the brain is number five? What is its function?

6. Number six is in purple. What part of the brain is number six? What is its function?

7. Number seven is in orange. What part of the brain is number seven? What is its function?